

# Spider Farmer

# USER MANUAL

## SF300/600

Everything your vegetables need



SF-VEG-02

# WHY CHOOSE SPIDER FARMER?



## **Well-established business:**

We are partners with Samsung



## **Shipping ability:**

A. Global delivery supported

B. We have warehouses in The USA,CA,AU,UK,EU,RU,TH  
(We offer delivery within 24 hours)



## **Customer Service :**

A. Local repair centers in The USA,CA,AU,UK,EU,RU

B. 5 Year warranty

C. Considerate customer service department



Professional technology support is available, including:  
PPFD test data, hanging height recommendations etc



## **Bulk price discounts:**

The larger the order the cheaper the price

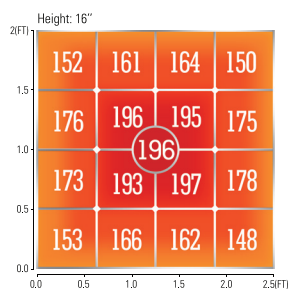
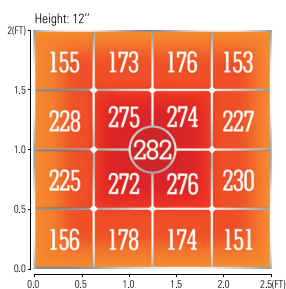
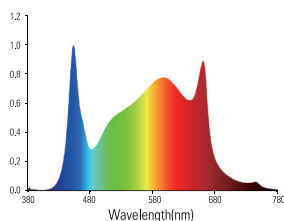
# **MANUAL INDEX**

SF300 Specifications	-----	01
SF600 Specifications	-----	02
Package Includes	-----	03
Warranty	-----	04
Other Categories	-----	05-06

FULL SPECTRUM

# SF300 33W

LED GROW LIGHT



## Specifications

Spectrum: 660-665nm,730-740nm,2800K-3000K,4800-5000K

LED: OSRAM

PPF : 75umol/S

Operating Temperature: -20-35 °C

Power Draw: 32.77W±5%@AC120-277V | 33.47W±5%@AC240V

PPE: 2.3umol/J

Light Dimensions: 23.62"x5.9"x1.39"

Coverage: 2x2.5 FT

Input Voltage: AC100-240V

Lifespan: 100000H

2.3

umol/J Efficacy



5

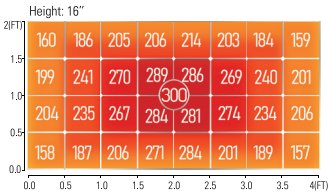
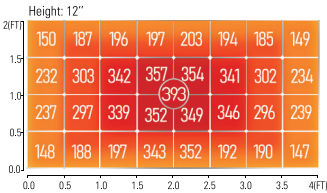
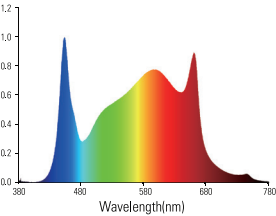
Years Warranty

Spider Farmer

FULL SPECTRUM

# SF600 74W

LED GROW LIGHT



## Specifications

Spectrum: 660-665nm,730-740nm,2800K-3000K,4800-5000K  
LED: OSRAM  
PPF : 75umol/S  
Operating Temperature: -20-35 °C  
Power Draw: 73.79W±5%@AC120-277V | 74.75W±5%@AC240V

PPE: 2.3umol/J  
Light Dimensions: 39"x5.9"x1.39"  
Coverage: 2x4 FT  
Input Voltage: AC100-240V  
Lifespan: 100000H

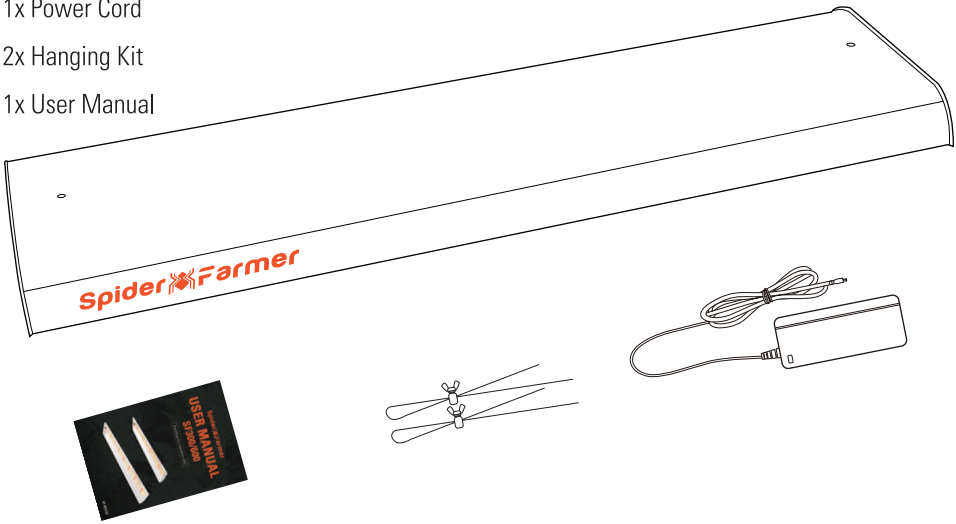
**2.3** umol/J Efficacy



Warranty

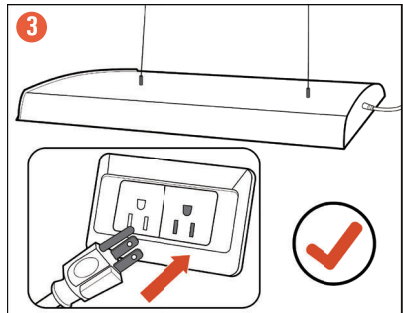
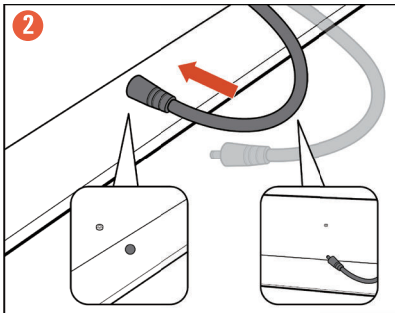
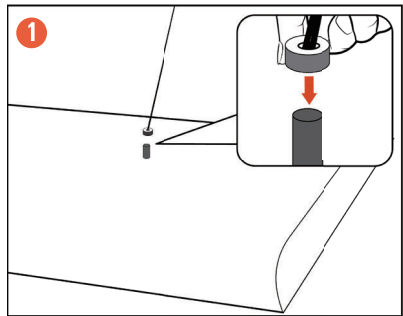
# PACKAGE INCLUDES

- 1x LED Grow Light
- 1x Power Cord
- 2x Hanging Kit
- 1x User Manual



# ASSEMBLY INSTRUCTIONS

- 1 Hang up 4-foot steel hanger
- 2 Connect LED board with driver
- 3 Connect Power Cord



## INSTALLATION NOTES

- Please follow the instructions to assemble the light. Improper installation, adjustment, alteration may cause personal injury or material damage.
- Please install the light in a right position and use standard accessories to hang the light to prevent falling, and make sure there are no flammable and explosive items within 0.5 meters.
- Please note that the safety and stability of the operating site is the premise of light maintenance and repair.
- Please make sure that all components are tightly connected before using.

## WARRANTY

- Spider Farmer will provide warranty services through the following options, which are only available in the United States, Canada, United Kingdom, European Union and Australia.
- You can initiate a return or exchange within 30 days of delivery by providing proof of purchase. Grow tents must be in their original condition. Spider Farmer will bear the shipping cost for return or replacement.
- If a defect arises within 2 years, Spider Farmer will provide free after-sales service. If a customer returns a product or part that is ineligible for service, Spider Farmer will charge the customer's credit card/PayPal for the authorized amount.
- LED lights purchased within 2 to 5 years can get free accessories or trade-in allowances.

## TIPS

- You will notice that seedlings grow faster under these lights than with lights you may have used in the past. Fertilizer application may need to be adjusted accordingly. Seedlings can burn from over-fertilization.
- Adjust the height of the lights to within a few inches of the plant tops for strongest growth. Once your seedlings have new true leaves and are ready to be transplanted into larger containers, the transplants can be moved a little farther away from your light source.
- Use a light timer to leave your grow lamps on for an average of 16 hours per day for young seedlings. If your light garden is next to a bright window, you can run your lamps for 14 hours. If your space doesn't have much natural light, you can run your lamps for up to 18 hours. Watch your seedlings to see how they perform.
- You can increase your light levels, to simulate full sun conditions, by moving your plants closer to the grow lamp. You can decrease your light levels, to simulate part-sun to shade conditions, by moving your plants farther away from your grow lamps.

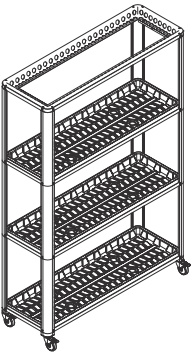
## OPERATING CAUTIONS

- Connect the light only to the power sources of the appropriate voltage using the plug received. If water is spilled near the power source, unplug the unit before you wipe up the water.
- If the provided plug does not fit your socket, please contact us for help by email immediately. Please do not replace the power cord or plug by yourself, otherwise we are not responsible for man-made damages.
- In order to properly cool itself, at least one inch of space is required between the fixture and the roof of your grow area. Failure to do so may shorten the fixture's lifespan.
- To achieve the optimal lifespan and performance of your fixtures, routinely check for and remove excess dust, debris, and mineral build up from heat sink and LED array.
- Do not put objects on top of the Light Fixture.
- Avoid touching the diodes with your hands.
- Unplug power cord on rainy days to prevent lightning strikes.
- Please unplug the light when cleaning and repairing.

# OTHER CATEGORIES

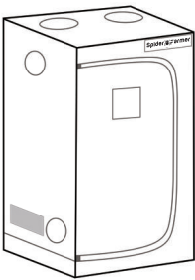
## SF600 Growshelves

This stand is made of high-grade iron with a moisture-resistant powder coating, ensuring its durability. The weight and durability make it a testament to exceptional quality. Textured and leak-proof trays provide a secure and hygienic environment for your plants. Installation takes under 20 minutes, and the stand has four removable wheels for effortless movement.



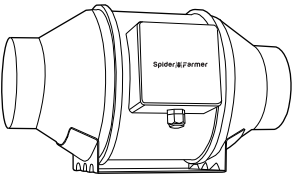
## Grow Tents

Spider Farmer grow tents are designed to create ideal growing conditions for indoor plant cultivation. By adopting a unique 16800 Oxford canvas and Diamond reflective Mylar, Spider Farmer grow tents effectively maximize light reflectivity and prevent light leaks. The metal frame is made from hardened steel, and our tents are three-times thicker and denser than ordinary tents. With a stable metal angle adapter and a load capacity of up to 140 lbs.



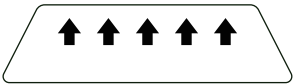
## Inline Fan

Utilizing a mixed flow design combined with an EC motor to ensure true energy efficiency with a very low noise level. Lightweight ABS blades reduce the airflow resistance and increase airflow by 40%. The smart controller has multiple modes for operation, 10 speeds, is easy to program and can control the humidity and temperature automatically.



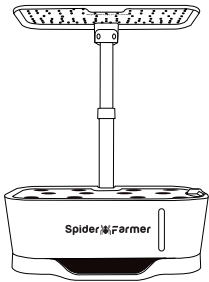
## Heat Mat

The Spider Farmer heating mat utilizes its advanced design to quickly heat the root area by 50-77°F (10-25°C) above the ambient air temp within 2 minutes. Compared with the traditional heating wire, the innovative far-infrared film heating speed is faster, the energy consumption is lower, the soft heat distribution is more uniform, and does not consume the moisture in the air, which is more conducive to the germination and rooting of indoor gardening.



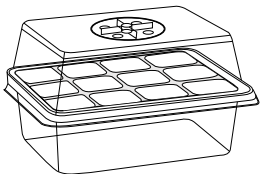
## Smart G12 Hydroponics Growing System

The Hydroponic growing system with dimming is ideal for growers to adjust the light intensity according to different growing stages. Allowing for up to 12 plants grow at a time, a visual window so you can see the water level and the growth of plant roots along with drain holes at the bottom of the tank to make drainage easier. The adjustable pump can adjust the water volume of the pump at any time. It is suitable for planting most herb plants, vegetables, fruits, flowers, including lettuce, basil, pepper, tomato and strawberry plants.



## Seed Starting Trays

Spider Farmer Seedling Tray – the perfect solution for transplanting seedlings in your garden with ease and efficiency! Crafted with flexible silicone walls, our tray offers unparalleled protection to the roots and soil, ensuring the integrity of your precious plants. With its bendable material, releasing soil has never been simpler!



# YOUR RELIABLE INDOOR GROW PARTNER

Our Social Media



Contact:

Tel: +1 866 553 8582

Email: [support@spider-farmer.com](mailto:support@spider-farmer.com)  
[info@spider-farmer.com](mailto:info@spider-farmer.com)