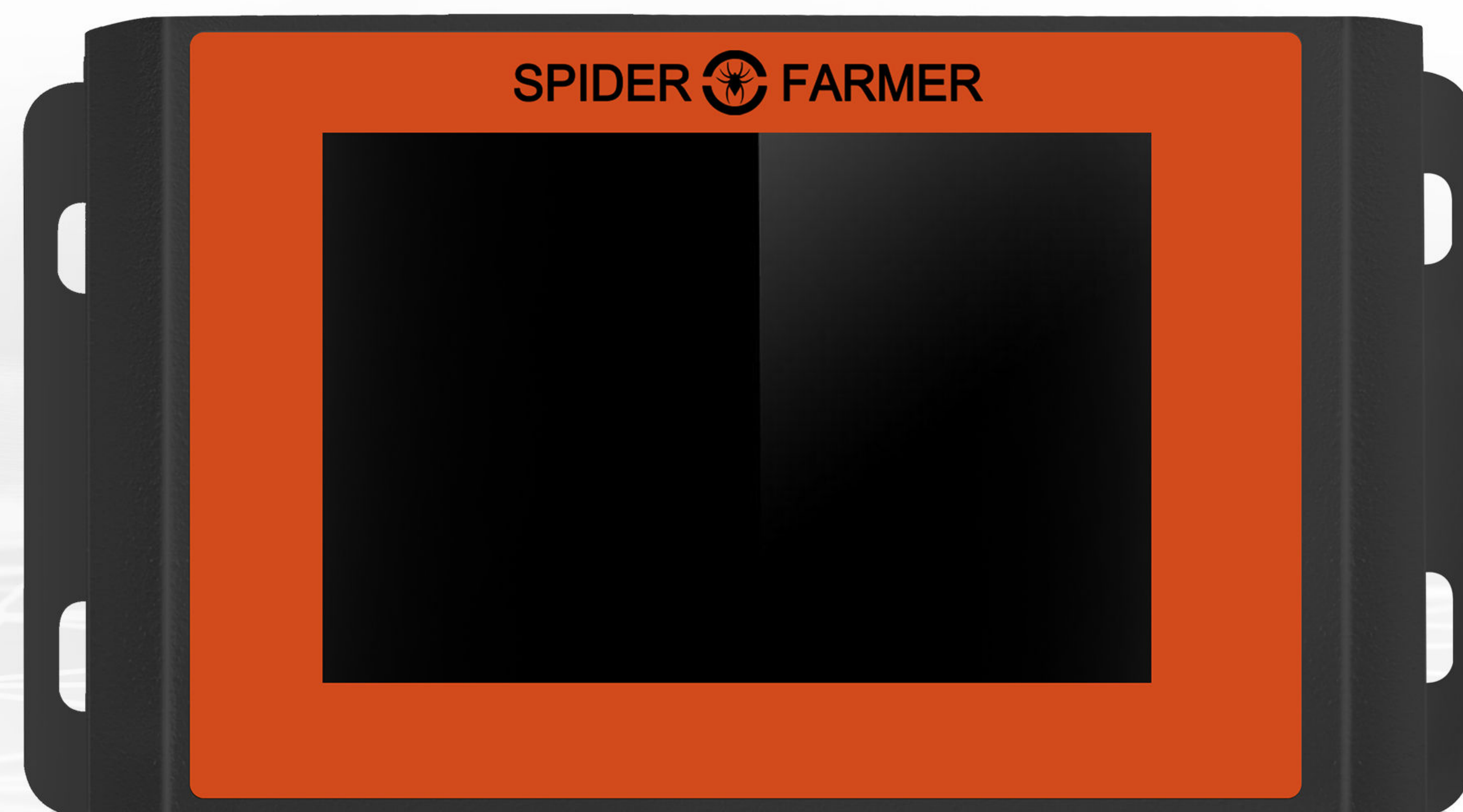


# SPIDER FARMER CONTROLLERS



- One channel dimming, eight sets of timing, touch screen control, real-time monitoring of temperature and humidity data.
- Support PWM/0-10V dimming power supply, and load up to 50 single power and 25 dual power dimming lamps.
- Independent interface for temperature and humidity. Insert temperature and humidity sensor probe when using this function.
- output signal to repeater amplifiers. Be able to connect 20 repeater amplifiers at the same time, and one can be connected to up to 50 single dimming power supply lamps.

**(This machine requires additional purchase)**

## • Accessories list

### ■ Host

Unified control of power supply with PWM/1-10V functional interface



### ■ Humidity Sensor

Used to collect environmental temperature/humidity data



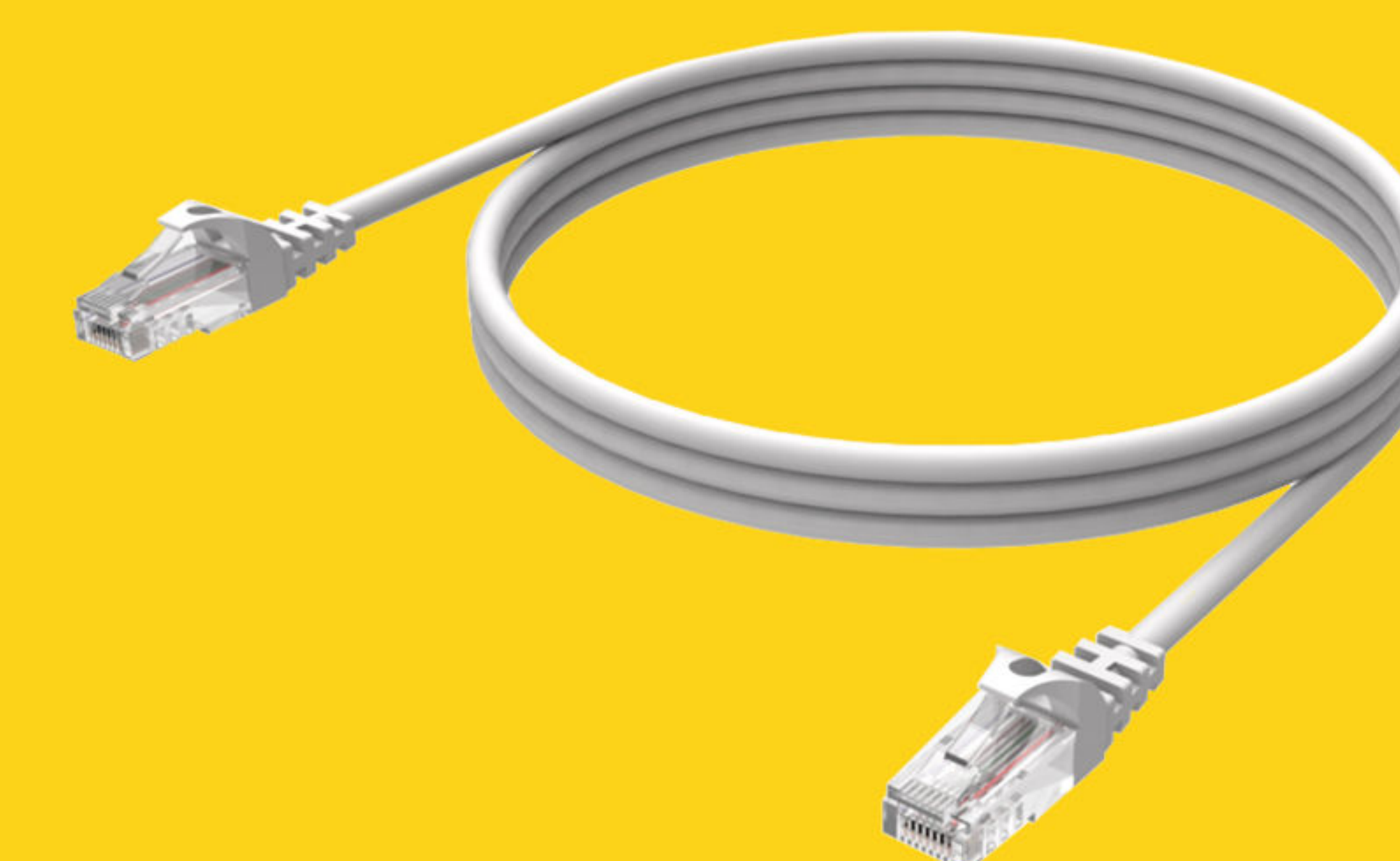
### ■ Power adapter

Use to support the power of controller



### ■ Dimming signal line

Use for connecting lamps



● Accessories usage

Accessory	Specifications	usage
Power adapter	(110V-220V input, DC12V output)	Used to power the dimmer
Temperature and humidity sensor	Working voltage: 5V Temperature measurement range: -40℃~+80℃ Temperature measurement accuracy: ±0.5℃ Humidity measurement range: 0-100%RH Humidity measurement accuracy: ±2%RH Cable length: 3 meters	Used to collect environmental temperature/humidity data
Dimming signal line	Gray	Used to connect lamps
Host	Silver or black, corresponding to different appearance labels according to customer needs	Unified control of power supply with PWM/1-10V functional interface

● Operation instructions

- Connect the power adapter, temperature and humidity sensor, and the corresponding interface position of the dimming signal line to the host.
- Connect the dimmer and the lamp with the signal wire.
- Turn on the power adapter switch to supply power.
- Follow the instructions on the page.

Specific examples are as follows:

Normal screen after booting, as shown in the following figure:

Temp28.8℃Humidity50.6%

LST12:03:43

Set Time

Brightness%

Dimming

Timing1

Timing2

Timing3

Timing4

Timing5

Timing6

Timing7

Timing8

Set the local time first,click the "Set Time" button to enter this interface, directly enter "hour-minute-second" in the blank space, click "Done" to complete. As shown in the figure below:

HrMinSec

1

2

3

4

5

6

4

5

6

Rset

0

Done

Back

● SPECIFICATIONS

Set two or eight timings. The green one means "running".  
The orange one means "waiting for a timing task".  
The blue background means no time setting.  
All timing tasks are automatically cycled in 24 hours.  
As shown in the following figure:

Temp28.8℃Humidity50.6%

LST12:03:43Set Time

Brightness%Dimming

Timming1Timming2Timming3Timming4

Timming5Timming6Timming7Timming8

Directly enter a valid number in the blank space, then click "Done" to complete the time-setting. As shown in following:

Time to startTime to end

Timing 1

: - :

Brightness% - %

12345

678910

ClearResetDoneBack

Click the slider or drag it to adjust the brightness. However, if timing function is set, the manual sliding dimming function can only be executed for 3 seconds, and manual brightness cannot be maintained. As shown in following:

Brightness 0%

0%100%

0%50%100%

Back

## ● Precautions

- Do not press screen with force or touch with sharp objects.
- Set the brightness range between 10-100.
- Do not heat at high temperature.
- This product is not edible.
- Do not soak this product in water.
- Keep away from Children.
- The product cannot be hit or dropped.
- This product is a precision electronic product, and isolation protection must be used during transportation.

